

12 Fairhaven Avenue, Chorlton, Manchester, M21 8TW



JP&Brimelow
ESTATE AGENTS

Offers In The Region Of £440,000

3 1 2 D

VIDEO TOUR AVAILABLE A stylishly presented THREE DOUBLE BEDROOM period, mid- terrace property. Situated on a sought-after Avenue, off Sandy Lane. Just a short walk from the vibrant bars and cafes on Beech Road, Chorlton Centre, and the Metrolink station on St Werburgh's Road, offering direct connections to Media City, Manchester City Centre, and Manchester International Airport. The thoughtfully-planned accommodation consists of a vestibule, an entrance hallway, a lounge to the front aspect with a stunning fireplace, a family room with views into the courtyard. A spacious fitted kitchen with access into the enclosed courtyard style garden completing the ground floor. Whilst to the first floor there is landing leading to three double bedrooms and a fitted three-piece family bathroom. The property benefits from a boarded loft with a fitted ladder, a Hive control system providing gas fired central heating and an enclosed rear West facing courtyard.





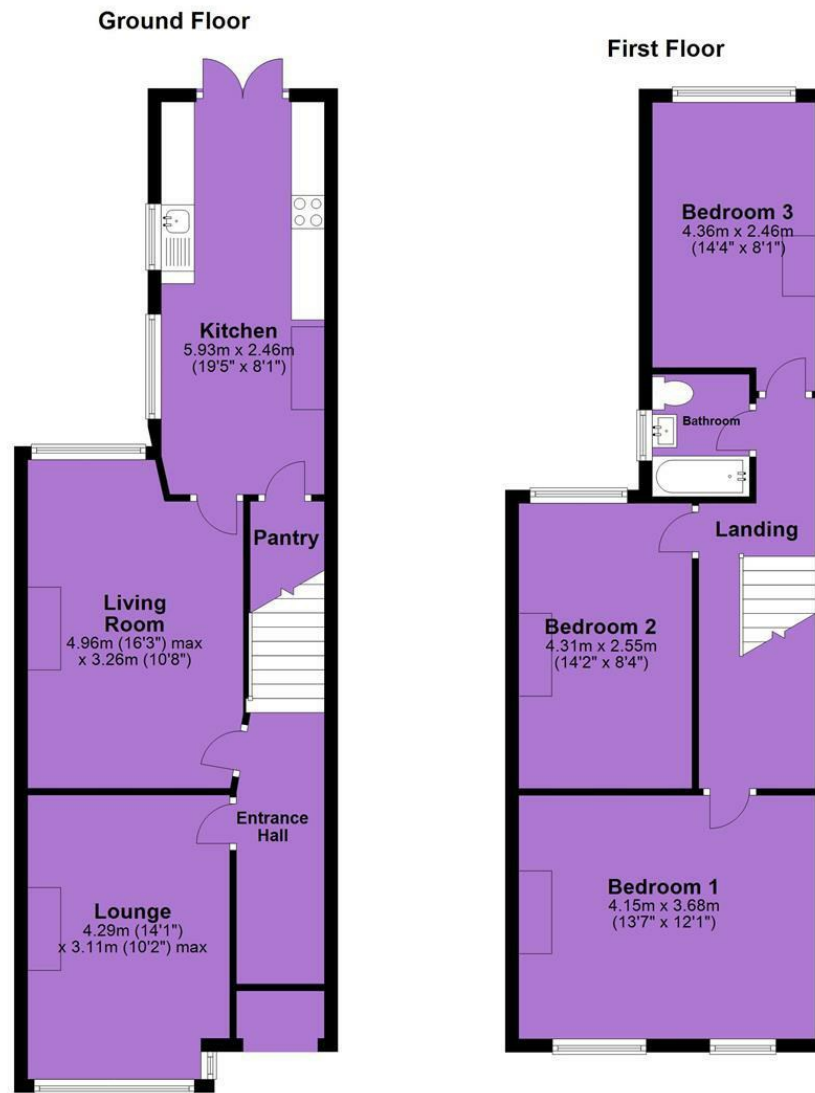
EPC Chart

Energy Efficiency Rating

	Current	Potential
Very energy efficient - lower running costs		
(92 plus) A		
(81-91) B		
(69-80) C		
(55-68) D		
(39-54) E		
(21-38) F		
(1-20) G		
Not energy efficient - higher running costs		
	56	76
England & Wales		EU Directive 2002/91/EC



Tenure: **Freehold** Council Tax Band: **B**



JP & Brimelow Estate Agents Ltd
 430 Barlow Moor Road, Manchester, M21 8AD
 Tel: 0161 8822233
 E: sales@jpbrimelow.co.uk www.jpandbrimelow.co.uk



JP & Brimelow
 ESTATE AGENTS

NOTICE: JP & Brimelow Estate Agents Ltd for themselves and for the vendors or lessors of this property whose agents they are give notice that:

- (i) the particulars are set out as a general outline only for the guidance of intending purchasers or lessees, and do not constitute, nor constitute part of, an offer or contract;
- (ii) all descriptions, dimensions, references to the condition and necessary permissions for use and occupation, and other details are given in good faith and are believed to be correct but any intending purchasers or tenants should not rely on them as statements or representations of fact but must satisfy themselves by inspection or otherwise as to the correctness of each of them;
- (iii) no person in the employment of JP & Brimelow Estate Agents Ltd has any authority to make or give any representation or warranty whatever in relation to this property.

jpandbrimelowestateagents

@jpandbrimelow